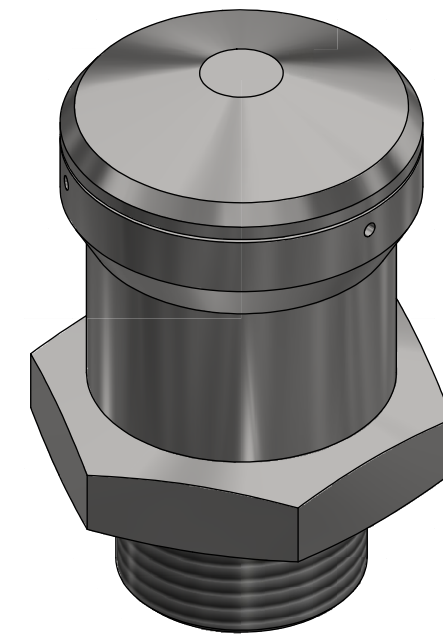


NOTE: 1
DESIGN CODE:
N/A

NOTE: 2
TECHNICAL CLASSIFICATION:
Article Type: 007-Valves
Main Group: 7.01. One Way Valves
Intermediate Group: 7.39.05. 1"
Sub Group: 7.39.206.01. 0-2 Bar

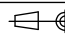
NOTE: 3
INTERFACE INFORMATION:
Pressure Rating Bar: 0,3-1,2
Design Water Depth: 800
Material: AISI 316L
Weight: 0,5 kg
Volume: 0,07 dm³
Submerged Weight: 0,46 kg
Surface Area: 353 cm²
Hydraulic: N/A
Mechanical: G 1-11-A
Electrical: N/A
Com. & Protocol: N/A

NOTE 4
Maximum Flow: 520 ltr/min
Cracking Pressure: 0,6 Bar
Cracking pressure adjustable from 0,3 to 1,2 Bar



03	6.7.2018	9-IFU (Issued for Use)		KOS	LGH	KOS
02	4.5.2018	9-IFU (Issued for Use)		KOS	LGH	KOS
01	3.5.2018	9-IFU (Issued for Use)		WTJ	KOS	WTJ
Rev.	Date	Reason for issue	Revision change	Made	Chk'd	Appr.

BLUE LOGIC 

Dwg Scale:
NTS
Dwg Proj: 
Dwg Format:
A3

Drawing title:
Relief Valve 1" - Highflow

Drawing number:
BB1758

Rev.
03